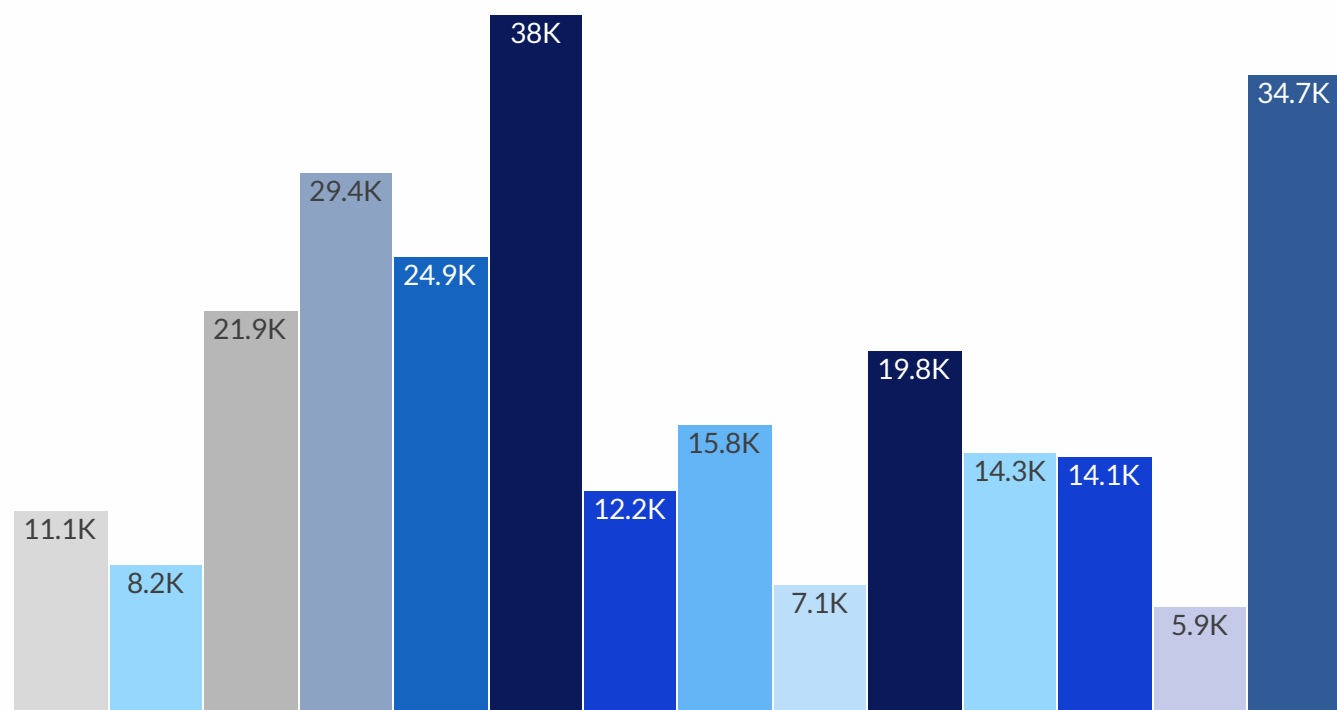


# Employment By Industry - December 2025

Oshawa Census Metropolitan Area



- Accommodation & Food Services
- Business, Building & Other Support Services
- Construction
- Educational services
- Finance, Insurance, Real Estate, Rental & Leasing
- Health Care & Social Assistance
- Information, Culture & Recreation
- Manufacturing
- Other services (except public administration)
- Professional, Scientific & Technical Services
- Public administration
- Transportation & Warehousing
- Utilities
- Wholesale & Retail Trade



Total employed, all industries

**258,200**

↓ -2,000 from previous month

↑ 32,400 from previous year



Wholesale & Retail Trade

**34,700**

↓ -1,500 from previous month

Health Care & Social Assistance

**38,000**

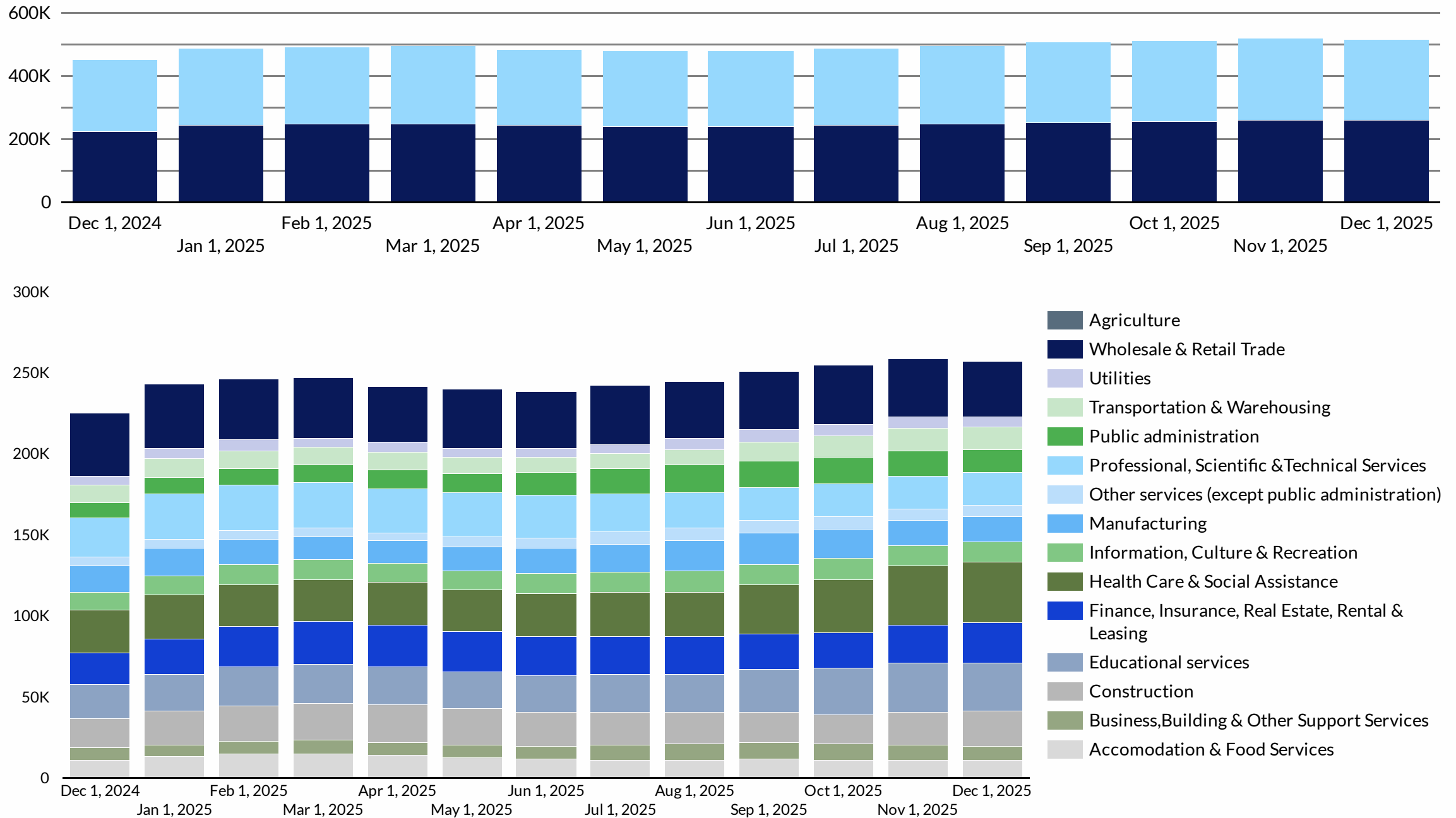
↑ 1,700 from previous month

Finance, insurance, real estate, rental and leasing

**24,900**

↑ 1,000 from previous month

## Total Employed in all industries over last year



## Change in Employment Same Month in Previous Year

Accommodation and food services

11,100

↑ 500

Business, building and other support services

8,200

↑ 400

Construction

21,900

↑ 3,400

Educational services

29,400

↑ 8,700

Finance, insurance, real estate, rental and leasing

24,900

↑ 5,100

Wholesale and retail trade

34,700

↓ -4,200

Health care and social assistance

38,000

↑ 11,400

Other services (except public administration)

7,100

↑ 1,500

Manufacturing

15,800

↓ -900

Professional, scientific and technical services

19,800

↓ -3,800

Utilities

5,900

↑ 300

Transportation and warehousing

14,100

↑ 3,300

Public administration

14,300

↑ 4,700

Information, culture and recreation

12,200

↑ 1,900

