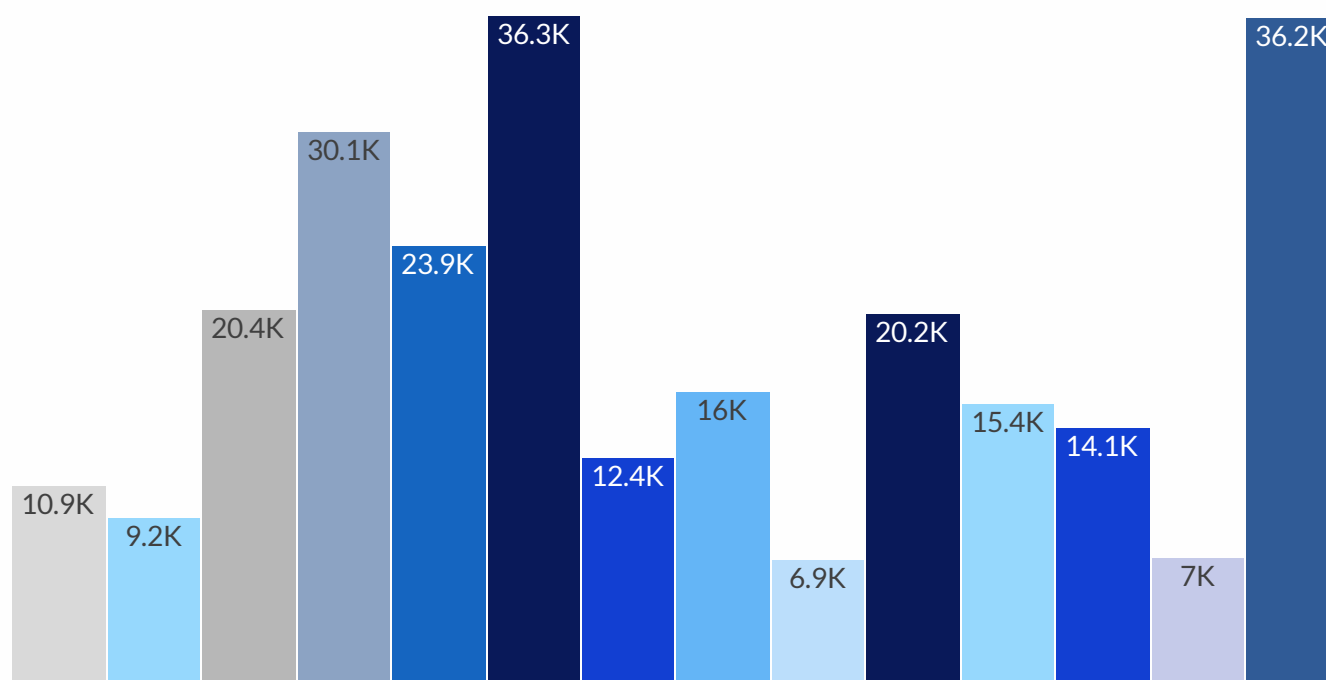


# Employment By Industry - November 2025

Oshawa Census Metropolitan Area



Total employed, all industries

**260,200**

↑ 3,800 from previous month

↑ 34,300 from previous year



Wholesale & Retail Trade

**36,200**

0 from previous month

Health Care & Social Assistance

**36,300**

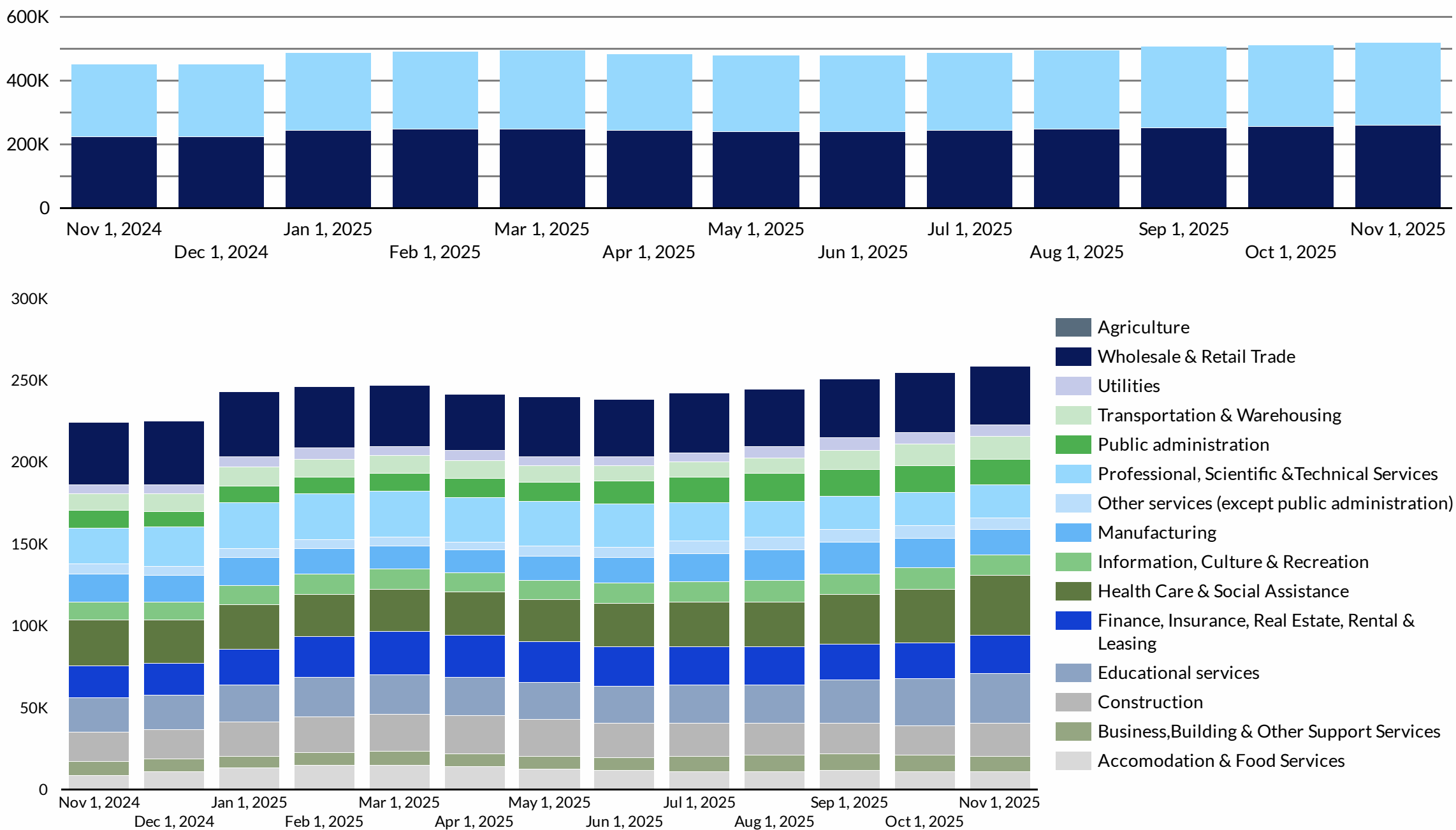
↑ 3,500 from previous month

Finance, insurance, real estate, rental and leasing

**23,900**

↑ 1,600 from previous month

## Total Employed in all industries over last year



## Change in Employment Same Month in Previous Year

Accommodation and food services

10,900

↑ 2,400

Business, building and other support services

9,200

↑ 500

Construction

20,400

↑ 2,500

Educational services

30,100

↑ 9,300

Finance, insurance, real estate, rental and leasing

23,900

↑ 4,100

Wholesale and retail trade

36,200

↓ -2,600

Health care and social assistance

36,300

↑ 8,100

Other services (except public administration)

6,900

↑ 400

Manufacturing

16,000

↓ -1,100

Professional, scientific and technical services

20,200

↓ -1,400

Utilities

7,000

↑ 2,100

Transportation and warehousing

14,100

↑ 3,300

Public administration

15,400

↑ 4,800

Information, culture and recreation

12,400

↑ 1,800

